

Catalogue no. 92-160-G

Boundary Files, Reference Guide

Census year 2011

First edition



Statistics
Canada

Statistique
Canada

Canada

How to obtain more information

For information about this product or the wide range of services and data available from Statistics Canada, visit our website at www.statcan.gc.ca, e-mail us at infostats@statcan.gc.ca, or telephone us, Monday to Friday from 8:30 a.m. to 4:30 p.m., at the following numbers:

Statistics Canada's National Contact Centre

Toll-free telephone (Canada and United States):

Inquiries line	1-800-263-1136
National telecommunications device for the hearing impaired	1-800-363-7629
Fax line	1-877-287-4369

Local or international calls:

Inquiries line	1-613-951-8116
Fax line	1-613-951-0581

Depository Services Program

Inquiries line	1-800-635-7943
Fax line	1-800-565-7757

To access this product

This product, Catalogue no. 92-160-G, is available free in electronic format. To obtain a single issue, visit our website at www.statcan.gc.ca and browse by "Key resource" > "Publications."

Standards of service to the public

Statistics Canada is committed to serving its clients in a prompt, reliable and courteous manner. To this end, Statistics Canada has developed standards of service that its employees observe. To obtain a copy of these service standards, please contact Statistics Canada toll-free at 1-800-263-1136. The service standards are also published on www.statcan.gc.ca under "About us" > "The agency" > "Providing services to Canadians."

Boundary Files, Reference Guide

Census year 2011

First edition

Published by authority of the Minister responsible for Statistics Canada

© Minister of Industry, 2011

All rights reserved. The content of this electronic publication may be reproduced, in whole or in part, and by any means, without further permission from Statistics Canada, subject to the following conditions: that it be done solely for the purposes of private study, research, criticism, review or newspaper summary, and/or for non-commercial purposes; and that Statistics Canada be fully acknowledged as follows: Source (or "Adapted from", if appropriate): Statistics Canada, year of publication, name of product, catalogue number, volume and issue numbers, reference period and page(s). Otherwise, no part of this publication may be reproduced, stored in a retrieval system or transmitted in any form, by any means—electronic, mechanical or photocopy—or for any purposes without prior written permission of Licensing Services, Information Management Division, Statistics Canada, Ottawa, Ontario, Canada K1A 0T6.

November 2011

Catalogue no. 92-160-G

ISBN 978-1-100-19466-0

Frequency: occasional

Ottawa

Cette publication est également disponible en français.

Note of appreciation

Canada owes the success of its statistical system to a long-standing partnership between Statistics Canada, the citizens of Canada, its businesses, governments and other institutions. Accurate and timely statistical information could not be produced without their continued cooperation and goodwill.

What's new?

- All higher level geographic attributes are included in all boundary files, where available at the time of release.
- Updates were made to the hydrographic layers with a selection of features from the National Hydro Network (NHN). As a result, users may notice differences in the geometry of the hydrography network in British Columbia compared to the 2006 version.
- Effective February 3, 2011, the term 'population centre' has replaced the term 'urban area.' Population centres are classified into one of three groups based on the size of their population. For more information, see the note entitled *From urban areas to population centres* (www.statcan.gc.ca/subjects-sujets/standard-norme/sgc-cgt/urban-urbain-eng.htm).
- All boundary files are available for free download from the Statistics Canada website (www.statcan.gc.ca).
- All 2011 Census spatial files are available as national files.

Table of contents

	Page
What's new?	4
1. About this guide.....	6
2. Overview	7
How to cite this guide	8
How to cite this product.....	8
3. About this product.....	9
Purpose of the product.....	9
Definitions and concepts	9
Content.....	9
General methodology.....	9
Limitations	11
Comparison to other products/versions	11
Using with other products.....	11
Reference date.....	11
4. Technical specifications.....	12
Record layouts and data descriptions	12
File specifications.....	26
Software formats	27
System requirements	27
File extension and accented character information.....	27
Geographic representation.....	27
File naming convention	28
5. Data quality.....	30
Lineage	30
Positional accuracy	30
Attribute accuracy	31
Logical consistency	31
Consistency with other products	31
Completeness	31
Appendix A Glossary.....	32
Appendix B Hierarchy of standard geographic units for dissemination, 2011 Census	38
Appendix C Geographic units by province and territory, 2011 Census	39
Appendix D Census subdivision types by province and territory, 2011 Census ..	40
Appendix E Statistics Canada Open Licence Agreement	42

1. About this guide

This reference guide is intended for users of the 2011 Census Boundary Files. The guide provides an overview of the files, the general methodology used to create them, and important technical information for users.

This reference guide does not provide details on specific software packages that are available for use with the 2011 Census Boundary Files. Users are advised to contact the appropriate software vendor for information.

The second edition of this guide will be released on February 8, 2012, to accompany the release of the Designated Place Boundary File and the Population Centre Boundary File.

The third edition of this guide will be released on October 24, 2012, to accompany the release of the Census Forward Sortation Area Boundary File.

This data product is provided 'as-is,' and Statistics Canada makes no warranty, either express or implied, including but not limited to, warranties of merchantability and fitness for a particular purpose. In no event will Statistics Canada be liable for any direct, special, indirect, consequential or other damages, however caused. The appropriate licence agreement is found in Appendix E Statistics Canada Open Licence Agreement.

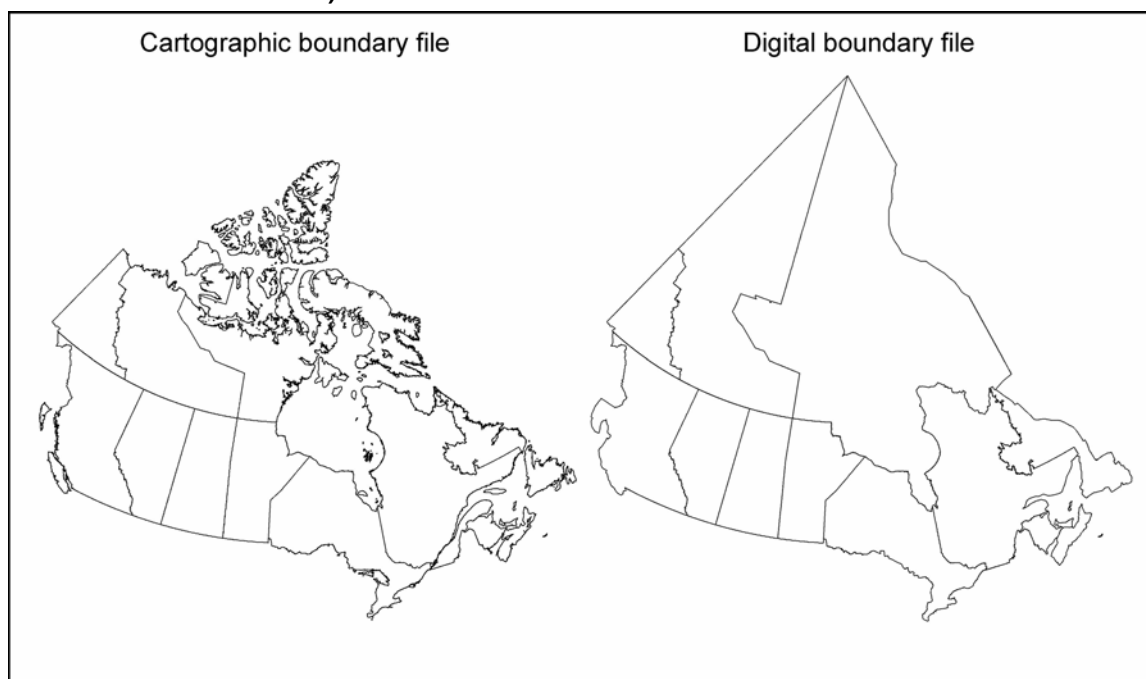
2. Overview

The 2011 Census Boundary Files depict boundaries of standard geographic areas established for the purpose of disseminating census data. A diagram illustrating the hierarchy of standard geographic units is included in Appendix B of this guide.

The 2011 Census Boundary Files provide a framework for mapping and spatial analysis. They are available for download in two types: cartographic and digital. Cartographic boundary files depict the geographic areas using only the shorelines of the major land mass of Canada and its coastal islands. Digital boundary files depict the full extent of the geographic areas, including the coastal water area. Figure 2.1 illustrates an example of cartographic and digital boundary files.

The 2011 Census Boundary Files are similar to the 2006 Census Boundary Files in format. New for the 2011 Census, each boundary file includes the unique identifiers, names and types (where applicable) of all higher level geographic areas available at time of release.

Figure 2.1 Example of a cartographic boundary file and a digital boundary file (provinces and territories)



Cartographic and digital boundary files are portrayed in latitude and longitude coordinates (North American Datum of 1983 [NAD83]). They are available for the following geographic areas:

- provinces and territories
- census divisions
- economic regions
- census metropolitan areas and census agglomerations
- census consolidated subdivisions
- census subdivisions
- federal electoral districts (2003 Representation Order)
- census tracts
- dissemination areas
- dissemination blocks
- population centres (**available February 8, 2012**)
- designated places (**available February 8, 2012**)
- census division population ecumene (**available February 8, 2012**)
- census forward sortation areas (**available October 24, 2012**)

Hydrographic reference files are also available:

- coast
- lakes
- rivers

How to cite this guide

Boundary Files, Reference Guide, First edition, 2011 Census. Statistics Canada Catalogue no. 92-160-G.

How to cite this product

Boundary Files, 2011 Census. Statistics Canada Catalogue no. 92-160-X.

Dissemination Block Boundary File, 2011 Census. Statistics Canada Catalogue no. 92-163-X.

Census Tract Boundary File, 2011 Census. Statistics Canada Catalogue no. 92-168-X.

Dissemination Area Boundary File, 2011 Census. Statistics Canada Catalogue no. 92-169-X.

Federal Electoral District Boundary File, 2011 Census. Statistics Canada Catalogue no. 92-171-X.

3. About this product

Purpose of the product

The purpose of the 2011 Census Boundary Files is to provide a framework for mapping to support Geographic Information System (GIS) applications used for land use and demographic studies, or social, economic and market research. Geographic identifiers permit linkage of statistical data to geographic areas depicted in the boundary files. Boundary files can also be used to create new geographic areas by combining standard geographic areas. The boundary files are positionally consistent with the 2011 Census Road Network File, which provides additional reference for geographic context for mapping applications.

Definitions and concepts

Geographic terms and concepts are briefly defined in the glossary (Appendix A). More details can be found in the *2011 Census Dictionary*, to be released February 8, 2012. Supplementary information is provided in the appendices.

Content

Each boundary file contains the unique identifier (UID), name and type (where applicable) of the geographic level the file represents, as well as the UID, name and type of all higher level geographies where available at time of release.

In addition to containing UID and name, the **Province/Territory** boundary file contains English name, French name, English abbreviation and French abbreviation.

In addition to containing UID and name, the **Federal Electoral District** boundary file contains English name and French name.

Geographic areas are portrayed in parts where the geographic area straddles a provincial or territorial boundary. For example, the census metropolitan area/census agglomeration geographic areas are portrayed in parts.

All files are available in English and in French, in three formats: ArcInfo® (.shp), Geography Markup Language (.gml), and MapInfo® (.tab).

General methodology

The National Geographic Database (NGD) is a joint Statistics Canada-Elections Canada initiative to develop and maintain a spatial database which serves the needs of both organizations. The focus of the NGD is the continual improvement of quality and currency of spatial coverage using updates from provinces, territories and local sources. The native file used for the creation of the spatial files resides on Statistics Canada's Spatial Data Infrastructure and was derived directly from data stored in the NGD environment.

To produce the files, the following processes were applied:

Creation of the 2011 Census Digital Boundary Files

For digital boundary file creation, spatial and attribute information were extracted using the lowest level of geography, the dissemination block. Primary data manipulation of the product layers

included preserving the geographic hierarchy of the attributes inherent within a geographic level. The dissemination block native file was copied into a File Geo Database to facilitate geo-processing (e.g., projecting, joins, transforming and verification operations). The spatial component of the file was reprojected from Lambert Conformal Conic into latitude and longitude coordinates (NAD83) using the ArcGIS® ArcCatalog (Feature-Project) tool.

All of the higher level geographies were created from the dissemination block level. The files were verified for their spatial and attribute content, translated into French and English, and appropriately named according to the file naming convention (see section 4). Final data processing consisted of the conversion from the File Geo Database format, using FME® (Safe Software), into the following file formats supported by Geographic Information System (GIS) software: ArcInfo® (.shp), Geography Markup Language (.gml), and MapInfo® (.tab).

The ArcInfo®, Geography Markup Language and MapInfo® files were compressed into WinZip® files (file extension .zip) and made available for download from the Internet.

Creation of the 2011 Census Cartographic Boundary Files

As with the digital boundary file creation, the spatial and attribute information for the cartographic boundary file creation were extracted at the lowest level of geography, the dissemination block. The spatial and attribute information of the hydrography component were extracted. The dissemination block and the hydrography spatial components were copied into a File Geo Database to facilitate geo-processing (e.g., projecting, joins, transforming and verification operations). The spatial component of the files were reprojected from Lambert Conformal Conic into latitude and longitude coordinates (NAD83) using the ArcGIS® ArcCatalog (Feature-Project) tool.

To create the cartographic boundary files, a subset of the full hydrography; the coastal layer was created. This subset of coastal hydrographic features was then used to erase the portions of the dissemination block that are covered by coastal waters.

The files were verified for their spatial and attribute content, translated into French and English, and appropriately named according to the file naming convention (see section 4). Final data processing consisted of the conversion from the File Geo Database format, using FME® (Safe Software), into the following file formats supported by Geographic Information System (GIS) software: ArcInfo® (.shp), Geography Markup Language (.gml), and MapInfo® (.tab).

The ArcInfo®, Geography Markup Language and MapInfo® files were compressed into WinZip® files (file extension .zip) and made available for download from the Internet.

Creation of the 2011 Hydrographic reference files

The inland water layer was created by selecting water features from the National Geographic Database's hydrographic reference layers. These reference data were sourced from the National Topographic Data Base (1:50,000 and the 1:250,000 maps) and the Digital Chart of the World. In selected areas, information was supplemented with data from the National Hydro Network.

Coastal file

The coastal file was created by selecting a subset of hydrographic features which represent the coastal water bodies surrounding the land area of Canada for use with the suite of cartographic boundary files.

Inland lakes and rivers (polygon)

The inland polygon lakes and rivers file contains a selection of internal water bodies and islands not found in the coastal layer.

Inland rivers (line)

The inland river file contains a selection of linear water features such as rivers and streams.

The ArcInfo®, Geography Markup Language and MapInfo® files were compressed into WinZip® files (file extension .zip) and made available for download from the Internet.

Limitations

The positional accuracy of these files does not support cadastral, surveying, digitizing or engineering applications.

The input data used to create the files was obtained from several sources having a wide range of scales. Boundary files will not be precise if plotted at a larger scale than the scale of the source material used in its creation. Maps created from the boundary files should not be used to determine the precise location of boundaries. They are not intended to serve as a legal or cadastral representation of the geographic areas.

Comparison to other products/versions

Each 2011 Census Boundary File is compatible with other 2011 Census Boundary File products. It portrays its respective geographic area boundary, as well as selected attributes for all higher level geographies that respect the geographic hierarchy, available at the time of release. Boundary files are derived from the same native sources. The attributes found in each of the boundary files are compatible. Where applicable, boundary files contain the same unique identifier, name and type.

The 2011 Boundary Files are similar but not necessarily consistent with the boundary file products released prior to the 2011 Census.

2011 Boundary Files can be linked to other 2011 census data products using the unique identifier (UID) for each geographic area.

Using with other products

When considering using the 2011 Census Boundary Files, users should be aware of the compatibility of these files with other similar files. Boundary files are available for download on the Internet from other websites; however, they may not be consistent with Statistics Canada files.

Reference date

The geographic reference date is a date determined by Statistics Canada to finalize the geographic framework for which census data are collected, tabulated and reported. The reference date for the geographic area boundaries in cartographic and digital boundary files is January 1, 2011.

4. Technical specifications

Record layouts and data descriptions

Province and Territory

The Province and Territory Boundary Files portray the boundaries of the 10 provinces and 3 territories for which census data are disseminated. Provinces and territories are the major political (legislated) areas of Canada. The files contain the boundaries of all provinces and territories which combined cover all of Canada.

Table 4.1 Province and territory boundary files record layout

Attribute name	Data type	Description
FID	Object ID (4)	Specific to ArcInfo®
Shape	Geometry	Specific to ArcInfo®
DigitalBoundary CartographicBoundary	MultiPolygon PropertyType	Shape geometry; specific to Geography Markup Language
PRUID	Character (2)	Uniquely identifies a province or territory
PRNAME	Character (55)	Province or territory name
PRENAME	Character (30)	Province or territory name in English
PRFNAME	Character (30)	Province or territory name in French
PREABBR	Character (10)	English abbreviation of the province or territory name
PRFABBR	Character (10)	French abbreviation of the province or territory name

Census division

The Census Division Boundary Files portray the census division boundaries for which census data are disseminated. A census division is a unit of regional government (such as a county or regional district) or an area treated as equivalent for statistical purposes. A census division is usually made up of a number of adjacent census subdivisions (municipalities). The files contain the boundaries of all census divisions which combined cover all of Canada.

Table 4.2 Census division boundary files record layout

Attribute name	Data type	Description
FID	Object ID (4)	Specific to ArcInfo®
Shape	Geometry	Specific to ArcInfo®
DigitalBoundary CartographicBoundary	MultiPolygon PropertyType	Shape geometry; specific to Geography Markup Language
PRUID	Character (2)	Uniquely identifies a province or territory
PRNAME	Character (55)	Province or territory name
CDUID	Character (4)	Uniquely identifies a census division (composed of the 2-digit province/territory unique identifier followed by the 2-digit census division code)
CDNAME	Character (40)	Census division name
CDTYPE	Character (3)	Census division type

Table 4.3 Census division types by province and territory, 2011 Census

Census division type		Canada	N.L.	P.E.I.	N.S.	N.B.	Que.	Ont.	Man.	Sask.	Alta.	B.C.	Y.T.	N.W.T.	Nvt.
CDR	Census division / Division de recensement	85	11	5	9	23	18	19
CT	County / Comté	15	15
CTY	County	41	...	3	18	20
DIS	District	10	10
DM	District municipality	1	1
MRC	Municipalité régionale de comté	81	81
RD	Regional district	28	28
REG	Region	10	1	...	6	3
RM	Regional municipality	6	6
TÉ	Territoire équivalent	12	12
TER	Territory / Territoire	1	1
UC	United counties	3	3
Total		293	11	3	18	15	98	49	23	18	19	29	1	6	3

... not applicable

Source: Statistics Canada, 2011 Census of Population.

Economic region

The Economic Region Boundary Files portray the economic region boundaries for which census data are disseminated. An economic region is a grouping of complete census divisions (with an exception in Ontario) created as a standard geographic unit for analysis of regional economic activity. The files contain the boundaries of all economic regions which combined cover all of Canada.

Table 4.4 Economic region boundary files record layout

Attribute name	Data type	Description
FID	Object ID (4)	Specific to ArcInfo®
Shape	Geometry	Specific to ArcInfo®
DigitalBoundary CartographicBoundary	MultiPolygon PropertyType	Shape geometry; specific to Geography Markup Language
PRUID	Character (2)	Uniquely identifies a province or territory
PRNAME	Character (55)	Province or territory name
ERUID	Character (4)	Uniquely identifies an economic region (composed of the 2-digit province/territory unique identifier followed by the 2-digit economic region code)
ERNAME	Character (85)	Economic region name

Census metropolitan area/census agglomeration

The Census Metropolitan Area and Census Agglomeration Boundary Files portray the boundaries of the census metropolitan areas and census agglomerations for which census data are disseminated. Census metropolitan areas and census agglomerations consist of one or more adjacent municipalities (census subdivisions) around a core. To form a census metropolitan area, the core must have a population of at least 50,000 and the entire census metropolitan area must have a total population of at least 100,000. To form a census agglomeration, the core must have a population of at least 10,000. The files contain the boundaries of all census metropolitan areas and census agglomerations defined for the census. Census metropolitan areas and census agglomerations crossing provincial boundaries appear in the boundary files in provincial parts.

There are four census metropolitan areas/census agglomerations that cross provincial boundaries. In each of these cases, the census metropolitan area/census agglomeration is divided by the provincial limit and is represented as two polygon records in the boundary file.

The four census metropolitan areas and census agglomerations that cross provincial limits are:

- Census Agglomeration of Campbellton, CMAUID 330, crosses the New Brunswick/Quebec provincial boundary
- Census Agglomeration of Hawkesbury, CMAUID 502, crosses the Quebec/Ontario provincial boundary
- Census Metropolitan Area of Ottawa – Gatineau, CMAUID 505, crosses the Quebec/Ontario provincial boundary
- Census Agglomeration of Lloydminster, CMAUID 840, crosses the Saskatchewan/Alberta provincial boundary

Table 4.5 Census metropolitan area/census agglomeration boundary files record layout

Attribute name	Data type	Description
FID	Object ID (4)	Specific to ArcInfo®
Shape	Geometry	Specific to ArcInfo®
DigitalBoundary CartographicBoundary	MultiPolygon PropertyType	Shape geometry; specific to Geography Markup Language
PRUID	Character (2)	Uniquely identifies a province or territory
PRNAME	Character (55)	Province or territory name
CMAUID	Character (3)	Uniquely identifies a census metropolitan area/census agglomeration
CMANAME	Character (100)	Census metropolitan area or census agglomeration name
CMATYPE	Character (1)	A one-character field identifying whether the unit is a census metropolitan area, a tracted census agglomeration or a non-tracted census agglomeration
CMAUID	Character (5)	Uniquely identifies the provincial/territorial part of a census metropolitan area/census agglomeration (composed of the 2-digit province/territory unique identifier followed by the 3-digit census metropolitan area/census agglomeration unique identifier)

Table 4.6 Census metropolitan area/census agglomeration types by province and territory, 2011 Census

Census metropolitan area/census agglomeration type		Canada	N.L.	P.E.I.	N.S.	N.B.	Que.	Ont.	Man.	Sask.	Alta.	B.C.	Y.T.	N.W.T.	Nvt.
B	census metropolitan area	34	1	0	1	2	6	15	1	2	2	4	0	0	0
D	census agglomeration with no census tracts	102	3	2	4	4	22	24	4	7	13	17	1	1	0
K	census agglomeration with census tracts	15	0	0	0	1	3	4	0	0	3	4	0	0	0
Total		151	4	2	5	7	31	43	5	9	18	25	1	1	0

Note: includes provincial parts.

Source: Statistics Canada, 2011 Census of Population.

Census consolidated subdivision

The Census Consolidated Subdivision Boundary Files portray the census consolidated subdivision boundaries for which census data are disseminated. A census consolidated subdivision is a grouping of adjacent census subdivisions (municipalities) used primarily for disseminating Census of Agriculture data. The files contain the boundaries of all census consolidated subdivisions which combined cover all of Canada.

Table 4.7 Census consolidated subdivision boundary files record layout

Attribute name	Data type	Description
FID	Object ID (4)	Specific to ArcInfo®
Shape	Geometry	Specific to ArcInfo®
DigitalBoundary	MultiPolygon	Shape geometry; specific to Geography Markup Language
CartographicBoundary	PropertyType	
PRUID	Character (2)	Uniquely identifies a province or territory
PRNAME	Character (55)	Province or territory name
CDUID	Character (4)	Uniquely identifies a census division (composed of the 2-digit province/territory unique identifier followed by the 2-digit census division code)
CDNAME	Character (40)	Census division name
CDTYPE	Character (3)	Census division type
CCSUID	Character (7)	Uniquely identifies a census consolidated subdivision (composed of the 2-digit province/territory unique identifier followed by the 2-digit census division code and the 3-digit census consolidated subdivision code)
CCSNAME	Character (55)	Census consolidated subdivision name

Census subdivision

The Census Subdivision Boundary Files portray the census subdivision boundaries for which census data are disseminated. A census subdivision is a municipality or an area treated as equivalent to a municipality for statistical purposes (for example, Indian reserves and unorganized territories). Municipal status is defined by laws in effect in each province and territory in Canada. The files contain the boundaries of all census subdivisions which combined cover all of Canada.

Table 4.8 Census subdivision boundary files record layout

Attribute name	Data type	Description
FID	Object ID (4)	Specific to ArcInfo®
Shape	Geometry	Specific to ArcInfo®
DigitalBoundary CartographicBoundary	MultiPolygon PropertyType	Shape geometry; specific to Geography Markup Language
PRUID	Character (2)	Uniquely identifies a province or territory
PRNAME	Character (55)	Province or territory name
CDUID	Character (4)	Uniquely identifies a census division (composed of the 2-digit province/territory unique identifier followed by the 2-digit census division code)
CDNAME	Character (40)	Census division name
CDTYPE	Character (3)	Census division type
ERUID	Character (4)	Uniquely identifies an economic region (composed of the 2-digit province/territory unique identifier followed by the 2-digit economic region code)
ERNAME	Character (85)	Economic region name
CCSUID	Character (7)	Uniquely identifies a census consolidated subdivision (composed of the 2-digit province/territory unique identifier followed by the 2-digit census division code and the 3-digit census consolidated subdivision code)
CCSNAME	Character (55)	Census consolidated subdivision name
CSDUID	Character (7)	Uniquely identifies a census subdivision (composed of the 2-digit province/territory unique identifier followed by the 2-digit census division code and the 3-digit census subdivision code)
CSDNAME	Character (55)	Census subdivision name
CSDTYPE	Character (3)	Census subdivisions are classified according to designations adopted by provincial/territorial or federal authorities
CMAUID	Character (3)	Uniquely identifies a census metropolitan area/census agglomeration
CMANAME	Character (100)	Census metropolitan area or census agglomeration name
CMATYPE	Character (1)	A one-character field identifying whether the unit is a census metropolitan area, a tracted census agglomeration or a non-tracted census agglomeration
CMAUID	Character (5)	Uniquely identifies the provincial/territorial part of a census metropolitan area/census agglomeration (composed of the 2-digit province/territory unique identifier followed by the 3-digit census metropolitan area/census agglomeration unique identifier)

Table 4.8 Census subdivision boundary files record layout (continued)

Attribute name	Data type	Description
SACTYPE	Character (1)	The Statistical Area Classification groups census subdivisions according to whether they are a component of a census metropolitan area, a census agglomeration, a census metropolitan influenced zone or the territories
SACCODE	Character (3)	The 3-digit Statistical Area Classification code

SACTYPE

The Statistical Area Classification type is a one-digit code that identifies whether a census subdivision is a component of a census metropolitan area (CMA), a census agglomeration (CA), a census metropolitan influenced zone (MIZ) or in the territories.

SACCODE

The Statistical Area Classification code is a three-digit code that identifies for which census metropolitan area (CMA), census agglomeration (CA) or census metropolitan influenced zone (MIZ) a census subdivision is a component. The MIZ categories, which denote the degree of influence that the CMAs and/or CAs have on these zones, are: strong (code 996), moderate (code 997), weak (code 998), no influence (code 999), or the territories (code 000), where the classification is not applicable.

Table 4.9 Statistical Area Classification values by province and territory, 2011 Census

Statistical Area Classification values		Canada	N.L.	P.E.I.	N.S.	N.B.	Que.	Ont.	Man.	Sask.	Alta.	B.C.	Y.T.	N.W.T.	Nvt.
1	CSD within CMA	469	13	0	5	31	157	92	12	41	44	74	0	0	0
2	CSD within CA with at least one CT	93	0	0	0	12	13	16	0	0	11	41	0	0	0
3	CSD within CA having no CTs	367	15	23	18	33	68	40	8	25	33	96	7	1	0
4	CSD outside of CMA/CA area having strong metropolitan influence	594	30	32	3	32	237	95	17	62	52	34	0	0	0
5	CSD outside of CMA/CA area having moderate metropolitan influence	1,441	134	48	23	91	490	143	61	248	111	92	0	0	0
6	CSD outside of CMA/CA area having weak metropolitan influence	976	75	6	39	56	145	87	116	208	106	138	0	0	0
7	CSD outside of CMA/CA area having no metropolitan influence	1,212	109	4	11	18	175	101	73	375	78	268	0	0	0
8	CSD within a territory	101	0	0	0	0	0	0	0	0	0	0	30	40	31
Total		5,253	376	113	99	273	1,285	574	287	959	435	743	37	41	31

CSD census subdivision
CMA census metropolitan area
CA census agglomeration
CT census tract

Source: Statistics Canada, 2011 Census of Population.

Federal electoral district

The Federal Electoral District Boundary Files portray the federal electoral district boundaries for which census data are disseminated. A federal electoral district is an area represented by a Member of Parliament in the House of Commons. The federal electoral district boundaries used for the 2011 Census are based on the 2003 Representation Order. The files contain the boundaries of all federal electoral districts which combined cover all of Canada. The Federal Electoral District boundary files portray the federal electoral districts in effect on January 1, 2011.

Table 4.10 Federal electoral district boundary files record layout

Attribute name	Data type	Description
FID	Object ID (4)	Specific to ArcInfo®
Shape	Geometry	Specific to ArcInfo®
DigitalBoundary	MultiPolygon	Shape geometry; specific to Geography Markup
CartographicBoundary	PropertyType	Language
PRUID	Character (2)	Uniquely identifies a province or territory
PRNAME	Character (55)	Province or territory name
FEDUID	Character (5)	Uniquely identifies a federal electoral district (composed of the 2-digit province/territory unique identifier followed by the 3-digit federal electoral district code)
FEDNAME	Character (85)	Federal electoral district name
FEDENAME	Character (55)	Federal electoral district name in English
FEDFNAME	Character (55)	Federal electoral district name in French

Census tract

The Census Tract Boundary Files portray the census tract boundaries for which census data are disseminated. Census tracts are small, relatively stable geographic areas that usually have a population between 2,500 and 8,000. They are located in census metropolitan areas and in census agglomerations with a core population of 50,000 or more in the previous census. The files contain the boundaries of all census tracts located within the census metropolitan areas and census agglomerations for which census tracts are delineated.

Table 4.11 Census tract boundary files record layout

Attribute name	Data type	Description
FID	Object ID (4)	Specific to ArcInfo®
Shape	Geometry	Specific to ArcInfo®
DigitalBoundary	MultiPolygon	Shape geometry; specific to Geography Markup
CartographicBoundary	PropertyType	Language
PRUID	Character (2)	Uniquely identifies a province or territory
PRNAME	Character (55)	Province or territory name
CMAUID	Character (3)	Uniquely identifies a census metropolitan area/census agglomeration
CMANAME	Character (100)	Census metropolitan area or census agglomeration name
CMATYPE	Character (1)	A one-character field identifying whether the unit is a census metropolitan area, a tracted census agglomeration or a non-tracted census agglomeration

Table 4.11 Census tract boundary files record layout (continued)

Attribute name	Data type	Description
CMAUID	Character (5)	Uniquely identifies the provincial/territorial part of a census metropolitan area/census agglomeration (composed of the 2-digit province/territory unique identifier followed by the 3-digit census metropolitan area/census agglomeration unique identifier)
CTUID	Character (10)	Uniquely identifies a census tract within a census metropolitan area/census agglomeration (composed of the 3-digit census metropolitan area/census agglomeration unique identifier followed by the 7.2-character census tract name)
CTNAME	Character (7)	Every census tract is assigned a 7.2-character numeric 'name' (including leading zeros, a decimal point and trailing zeros)

Dissemination area

The Dissemination Area Boundary Files portray the dissemination area boundaries for which census data are disseminated. A dissemination area is a small area composed of one or more neighbouring blocks and is the smallest standard geographic area for which all census data are available.

Table 4.12 Dissemination area boundary files record layout

Attribute name	Data type	Description
FID	Object ID (4)	Specific to ArcInfo®
Shape	Geometry	Specific to ArcInfo®
DigitalBoundary	MultiPolygon	Shape geometry; specific to Geography Markup Language
CartographicBoundary	PropertyType	
PRUID	Character (2)	Uniquely identifies a province or territory
PRNAME	Character (55)	Province or territory name
CDUID	Character (4)	Uniquely identifies a census division (composed of the 2-digit province/territory unique identifier followed by the 2-digit census division code)
CDNAME	Character (40)	Census division name
CDTYPE	Character (3)	Census division type
ERUID	Character (4)	Uniquely identifies an economic region (composed of the 2-digit province/territory unique identifier followed by the 2-digit economic region code)
ERNAME	Character (85)	Economic region name
CCSUID	Character (7)	Uniquely identifies a census consolidated subdivision (composed of the 2-digit province/territory unique identifier followed by the 2-digit census division code and the 3-digit census consolidated subdivision code)
CCSNAME	Character (55)	Census consolidated subdivision name
CSDUID	Character (7)	Uniquely identifies a census subdivision (composed of the 2-digit province/territory unique identifier followed by the 2-digit census division code and the 3-digit census subdivision code)

Table 4.12 Dissemination area boundary files record layout (continued)

Attribute name	Data type	Description
CSDNAME	Character (55)	Census subdivision name
CSDTYPE	Character (3)	Census subdivisions are classified according to designations adopted by provincial/territorial or federal authorities
CMAUID	Character (3)	Uniquely identifies a census metropolitan area/census agglomeration
CMANAME	Character (100)	Census metropolitan area or census agglomeration name
CMATYPE	Character (1)	A one-character field identifying whether the unit is a census metropolitan area, a tracted census agglomeration or a non-tracted census agglomeration
CMAUID	Character (5)	Uniquely identifies the provincial/territorial part of a census metropolitan area/census agglomeration (composed of the 2-digit province/territory unique identifier followed by the 3-digit census metropolitan area/census agglomeration unique identifier)
SACTYPE	Character (1)	The Statistical Area Classification groups census subdivisions according to whether they are a component of a census metropolitan area, a census agglomeration, a census metropolitan influenced zone or the territories
SACCODE	Character (3)	The 3-digit Statistical Area Classification code
CTUID	Character (10)	Uniquely identifies a census tract within a census metropolitan area/census agglomeration (composed of the 3-digit census metropolitan area/census agglomeration unique identifier followed by the 7.2-character census tract name)
CTNAME	Character (7)	Every census tract is assigned a 7.2-character numeric 'name' (including leading zeros, a decimal point and trailing zeros)
DAUID	Character (8)	Uniquely identifies a dissemination area (composed of the 2-digit province/territory unique identifier followed by the 2-digit census division code and the 4-digit dissemination area code)

Dissemination block

The Dissemination Block Boundary Files portray the dissemination block boundaries for which census data are disseminated. A dissemination block is an area bounded on all sides by roads and/or boundaries of standard geographic areas and is the smallest geographic area for which population and dwelling count data are available.

The digital boundary file contains the boundaries of all 493,345 dissemination blocks which combined cover all of Canada. The cartographic boundary file contains the boundaries of 493,192 dissemination blocks.

Table 4.13 Dissemination block boundary files record layout

Attribute name	Data type	Description
FID	Object ID (4)	Specific to ArcInfo®
Shape	Geometry	Specific to ArcInfo®
DigitalBoundary	MultiPolygon	Shape geometry; specific to Geography
CartographicBoundary	PropertyType	Markup Language
PRUID	Character (2)	Uniquely identifies a province or territory
PRNAME	Character (55)	Province or territory name
CDUID	Character (4)	Uniquely identifies a census division (composed of the 2-digit province/territory unique identifier followed by the 2-digit census division code)
CDNAME	Character (40)	Census division name
CDTYPE	Character (3)	Census division type
ERUID	Character (4)	Uniquely identifies an economic region (composed of the 2-digit province/territory unique identifier followed by the 2-digit economic region code)
ERNAME	Character (85)	Economic region name
CCSUID	Character (7)	Uniquely identifies a census consolidated subdivision (composed of the 2-digit province/territory unique identifier followed by the 2-digit census division code and the 3- digit census consolidated subdivision code)
CCSNAME	Character (55)	Census consolidated subdivision name
CSDUID	Character (7)	Uniquely identifies a census subdivision (composed of the 2-digit province/territory unique identifier followed by the 2-digit census division code and the 3-digit census subdivision code)
CSDNAME	Character (55)	Census subdivision name
CSDTYPE	Character (3)	Census subdivisions are classified according to designations adopted by provincial/territorial or federal authorities
CMAUID	Character (3)	Uniquely identifies a census metropolitan area/census agglomeration
CMANAME	Character (100)	Census metropolitan area or census agglomeration name

Table 4.13 Dissemination block boundary files record layout (continued)

Attribute name	Data type	Description
CMATYPE	Character (1)	A one-character field identifying whether the unit is a census metropolitan area, a tracted census agglomeration or a non-tracted census agglomeration
CMAPUID	Character (5)	Uniquely identifies the provincial/territorial part of a census metropolitan area/census agglomeration (composed of the 2-digit province/territory unique identifier followed by the 3-digit census metropolitan area/census agglomeration unique identifier)
SACTYPE	Character (1)	The Statistical Area Classification groups census subdivisions according to whether they are a component of a census metropolitan area, a census agglomeration, a census metropolitan influenced zone or the territories
SACCODE	Character (3)	The 3-digit Statistical Area Classification code
FEDUID	Character (5)	Uniquely identifies a federal electoral district (composed of the 2-digit province/territory unique identifier followed by the 3-digit federal electoral district code)
FEDNAME	Character (85)	Federal electoral district name
CTUID	Character (10)	Uniquely identifies a census tract within a census metropolitan area/census agglomeration (composed of the 3-digit census metropolitan area/census agglomeration unique identifier followed by the 7.2-character census tract name)
CTNAME	Character (7)	Every census tract is assigned a 7.2-character numeric 'name' (including leading zeros, a decimal point and trailing zeros)
DAUID	Character (8)	Uniquely identifies a dissemination area (composed of the 2-digit province/territory unique identifier followed by the 2-digit census division code and the 4-digit dissemination area code)
DBUID	Character (10)	Uniquely identifies a dissemination block (composed of the 2-digit province/territory unique identifier followed by the 2-digit census division code, the 4-digit dissemination area code and the 2-digit dissemination block code)
DBRPLAT	Number (11.8)	Dissemination block representative point latitude coordinate, in decimal degrees
DBRPLONG	Number (13.8)	Dissemination block representative point longitude coordinate, in decimal degrees

Below is a list of the 153 dissemination blocks which are not included within the cartographic boundary file. These dissemination blocks are located entirely within coastal waters and were therefore removed during the production of the cartographic boundary file.

1001050321	1209084511	1217039801	1314016201	3551010630
1001050322	1209084512	1217039902	1315015803	3558038552
1001050401	1209084513	1217040004	1315015901	3558043301
1001052001	1209084514	1217040316	1315016605	3560032309
1001055609	1209084624	1217040419	1315017801	5915005618
1001068206	1209084625	1217040514	1315022001	5915324116
1001071915	1209084626	1217040619	1315029006	5915356908
1001072415	1209084627	1217041510	1315029104	5915356909
1002007920	1209084628	1217041723	2401002615	5915357612
1002007921	1209098004	1217042005	2402006406	5915360205
1002011705	1209098104	1217042509	2402006412	5917033105
1003007304	1212011001	1217042603	2410012219	5917047201
1004010913	1212012209	1217042929	2423006601	5917062904
1007048703	1214003909	1217043205	2423006610	5917063410
1007051918	1217035218	1217044003	2437029911	5917064208
1007051927	1217035219	1217044308	2465066705	5917064819
1007055003	1217035305	1217044605	2471024721	5917068801
1007055004	1217035507	1217044913	2472019943	5919018901
1008017007	1217035508	1217045010	2497008743	5919030508
1008022116	1217035702	1217045112	2497012525	5921026004
1103009910	1217035703	1217051713	3507022916	5924021206
1103013011	1217035809	1217052209	3528021912	5924026415
1103016014	1217036209	1217052812	3528022050	5926042407
1103016841	1217036707	1217053104	3528022051	5929015013
1201004907	1217037415	1302005612	3537081315	5929016502
1201004908	1217037814	1302006110	3541014619	5929017310
1201004909	1217038913	1302006304	3542024424	5943007022
1204003909	1217039316	1302007220	3543089711	5947006305
1204003910	1217039506	1302007221	3543089712	6204006239
1209083805	1217039612	1302007222	3551007201	
1209084510	1217039705	1314009312	3551009002	

Population centre (available February 8, 2012)

The Population Centre Boundary Files portray the population centre boundaries for which census data are disseminated. A population centre has a minimum population concentration of 1,000 persons and a population density of at least 400 persons per square kilometre, based on the current census population count. The files will contain the boundaries of all population centres defined for the census. Population centres crossing provincial boundaries appear in the boundary files in provincial parts.

Designated place (available February 8, 2012)

The Designated Place Boundary Files portray the designated place boundaries for which census data are disseminated. A designated place is normally a small community or settlement that does not meet the criteria established by Statistics Canada to be a census subdivision (an area with municipal status) or a population centre. Designated places are created by provinces and territories, in cooperation with Statistics Canada, to provide data for submunicipal areas. The files will contain the boundaries of all designated places defined for the census.

Hydrographic reference layers

The hydrographic reference layers are provided to allow for the mapping of inland water, oceans, Great Lakes and the St. Lawrence River. The hydrographic layers were created to be used in conjunction with the boundary files. The record layout in Table 4.14 below is for interior water (polygons), coastal water bodies (polygons) and interior rivers (lines).

Table 4.14 Hydrographic reference layers record layout

Attribute name	Data type	Description
FID	Object ID (4)	Specific to ArcInfo®
Shape	Geometry	Specific to ArcInfo®
DigitalBoundary Cartographic Boundary	MultiPolygon PropertyType	Shape geometry; specific to Geography Markup language
HYDROUID	Character (8)	Uniquely identifies a water feature
NAME	Character (55)	Feature name
RANK	Integer	Feature rank
PRUID	Character (2)	Uniquely identifies a province or territory

Attribute domain values**CDTYPE**

CDTYPE	CD description
CDR	Census division / Division de recensement
CT	County / Comté
CTY	County
DIS	District
DM	District municipality
MRC	Municipalité régionale de comté
RD	Regional district
REG	Region
RM	Regional municipality
TÉ	Territoire équivalent
TER	Territory / Territoire
UC	United counties

CSDTYPE

Census subdivisions are classified according to designations adopted by provincial/territorial or federal authorities.

CSDTYPE	CSD description	CSDTYPE	CSD description
< Null >	not applicable	RCR	Rural community / Communauté rurale
C	City / Cité	RDA	Regional district electoral area
CC	Chartered community	RG	Region
CG	Community government	RGM	Regional municipality
CN	Crown colony / Colonie de la couronne	RM	Rural municipality
COM	Community	RV	Resort village
CT	Canton (municipalité de)	S-É	Indian settlement / Établissement indien
CU	Canton unis (municipalité de)	SA	Special area
CV	City / Ville	SC	Subdivision of county municipality / Subdivision municipalité de comté
CY	City	SÉ	Settlement / Établissement
DM	District municipality	SET	Settlement
HAM	Hamlet	SG	Self-government / Autonomie gouvernementale
ID	Improvement district	SM	Specialized municipality
IGD	Indian government district	SNO	Subdivision of unorganized / Subdivision non organisée
IM	Island municipality	SV	Summer village
IRI	Indian reserve / Réserve indienne	T	Town
LGD	Local government district	TC	Terres réservées aux Cris
LOT	Township and royalty	TI	Terre inuite
M	Municipality / Municipalité	TK	Terres réservées aux Naskapis
MD	Municipal district	TL	Teslin land
MÉ	Municipalité	TP	Township
MU	Municipality	TV	Town / Ville
NH	Northern hamlet	V	Ville
NL	Nisga'a land	VC	Village cri
NO	Unorganized / Non organisé	VK	Village naskapi
NV	Northern village	VL	Village
P	Parish / Paroisse (municipalité de)	VN	Village nordique
PE	Paroisse (municipalité de)		

CMATYPE

Census metropolitan area or census agglomeration type.

CMATYPE	CMA description
B	Census metropolitan area (CMA)
D	Census agglomeration (CA) that is not tracted
K	Census agglomeration (CA) that is tracted
< Null >	not applicable (outside of CMA or CA)

SACTYPE

The Statistical Area Classification type is a one-digit code that identifies whether a census subdivision is a component of a census metropolitan area (CMA), a census agglomeration (CA), a census metropolitan influenced zone (MIZ) or in the territories.

SACTYPE	SACTYPE description
1	Census subdivision within census metropolitan area
2	Census subdivision within census agglomeration with at least one census tract
3	Census subdivision within census agglomeration having no census tracts
4	Census subdivision outside of census metropolitan area/census agglomeration area having strong metropolitan influence
5	Census subdivision outside of census metropolitan area/census agglomeration area having moderate metropolitan influence
6	Census subdivision outside of census metropolitan area/census agglomeration area having weak metropolitan influence
7	Census subdivision outside of census metropolitan area/census agglomeration area having no metropolitan influence
8	Census subdivision within a territory

SACCODE

The Statistical Area Classification code is a three-digit code that identifies which census metropolitan area (CMA), census agglomeration (CA) or census metropolitan influenced zone (MIZ) a census subdivision is a component of. The MIZ categories, which denote the degree of influence that the CMAs and/or CAs have on these zones, are: strong (code 996), moderate (code 997), weak (code 998), no influence (code 999), or the territories (code 000) where the classification is not applicable.

SACCODE	SACCODE description
000	Territories, classification is not applicable
001-995	CMA or CA
996	Strong
997	Moderate
998	Weak
999	No influence

File specifications

Not applicable

Software formats

Boundary Files for the 2011 Census are available for download from the Statistics Canada website in the following formats:

- ArcInfo® format
File extension: .shp
- Geography Markup Language version 3.1.1
File extension: .gml
- MapInfo® format
File extension: .tab

System requirements

Not applicable

File extension and accented character information

The ArcInfo®, Geography Markup Language and MapInfo® files are compressed into WinZip® files (file extension .zip).

A XML schema file (.xsd) is included to describe and validate the structure and content of the .gml files.

Some of the 2011 Boundary Files contain attributes with accented characters. They were successfully tested on desktop versions of ArcGIS® 9.3.1 and MapInfo® 11.0.1.

Geographic representation

The 2011 Census Boundary Files are available on the Statistics Canada website in the following geographic representation:

Datum:	NAD83
Coordinates:	Longitude/Latitude

The North American Datum of 1983 (NAD83) is an adjustment of the 1927 datum that reflects the higher accuracy of geodetic surveying.

The geographical coordinate system is the primary locational reference system for the earth. This system provides for the unique statement of location for features such as points, lines and polygons.

Users of 2011 Census Boundary Files can transform the files into the representation that best satisfies their needs knowing the effects these representations have on angles, areas, distances and direction. Users have the option to choose the best projection in concert with the maps objectives.

File naming convention

Spatial product file names follow a file naming convention. The geographic area and code, file type, geographic reference date, software type and language are embedded within the file name. Standardizing the names of the files facilitates the storage of compressed files, all having the extension .zip.

Each file name is 13 characters in length. All alphabetic characters are in lower case to maintain consistency.

First character: projection of file

g projection is Geographic (latitude/longitude)

Next three characters: primary geographic level of file

pr_	province/territory
fed	federal electoral district
er_	economic region
cd_	census division
csd	census subdivision
ccs	census consolidated subdivision
cma	census metropolitan area/census agglomeration
ct_	census tract
da_	dissemination area
db_	dissemination block
hy_	supporting hydrography (Great Lakes, St. Lawrence River, oceans, etc.)

Next three numbers: geographic code of coverage

000 Canada

Next character: file type

a	digital boundary file
b	cartographic boundary file
c	interior lakes and rivers hydrographic reference file (polygon)
d	interior rivers hydrographic reference file (line)
e	ecumene
h	hydrographic coverage of Great Lakes, St. Lawrence River and surrounding oceans

Next two numbers: geographic reference date

The geographic reference date is a date determined by Statistics Canada for the purpose of finalizing the geographic framework for which census data are collected, tabulated and reported. For 2011 Census products, the geographic reference date is January 1, 2011.

11 geographic reference date is 2011

Next character: file format

a	ArcInfo® (.shp)
g	Geography Markup Language (.gml)
m	MapInfo® (.tab)

Final two characters: language

_e	English
_f	French

5. Data quality

Spatial data quality elements provide information on the fitness-for-use of a spatial database by describing why, when and how the data are created, and how accurate the data are. The elements include an overview describing the purpose and usage, as well as specific quality elements reporting on the lineage, positional accuracy, attribute accuracy, logical consistency and completeness. This information is provided to users for all spatial data products disseminated for the census.

Lineage

Lineage describes the history of the spatial data, including descriptions of the source material from which the data were derived, and the methods of derivation. It also contains the dates of the source material, and all transformations involved in producing the final digital files.

Boundary files

The geographic area unique identifier, name, type, and the relationships among the various geographic levels are found on Statistics Canada's Spatial Data Infrastructure. The data for administrative areas are updated using information from provincial and territorial sources.

Positional accuracy

Positional accuracy refers to the absolute and relative accuracy of the positions of geographic features. Absolute accuracy is the closeness of the coordinate values in a dataset to values accepted as or being true. Relative accuracy is the closeness of the relative positions of features to their respective relative positions accepted as or being true. Descriptions of positional accuracy include the quality of the final file or product after all transformations.

The Spatial Data Infrastructure is not Global Positioning Systems (GPS)-compliant. However, every possible attempt is made to ensure that the geographic area boundaries maintained in the Spatial Data Infrastructure respect the limits of the administrative entities that they represent (e.g., census division and census subdivision) or on which they are based (e.g., census metropolitan area or census agglomeration). The positional accuracy of these limits is dependent upon source materials used by Statistics Canada to identify the location of limits. In addition, due to the importance placed on relative positional accuracy, the positional accuracy of other geographic data (e.g., road network data and hydrographic data) that are stored within the Spatial Data Infrastructure is considered when positioning the limits of the geographic areas.

Within Statistics Canada's Spatial Data Infrastructure, dissemination block representative points were generated using ArcGIS® software in conjunction with their respective cartographic boundaries. The most detailed hydrography available was used in identifying cartographic boundaries and calculating representative points in Statistics Canada native format. Efforts were made to ensure that representative points do not fall in water, where possible. After geo-processing the dissemination block boundary file and the hydrography files (e.g., projecting, appending, transforming and verification operations) and converting into ArcInfo (.shp), Geography Markup Language (.gml) or MapInfo (.tab) files, these manipulations may have caused slight shifting of some of the underlying land and hydrography features resulting in representative points falling in water.

Attribute accuracy

Attribute accuracy refers to the accuracy of the quantitative and qualitative information attached to each feature (e.g., census subdivision name, unique identifier).

As noted under Lineage, the attributes (names, types and unique identifiers) for all geographic areas are sourced from Statistics Canada's Spatial Data Infrastructure. The names and types of administrative geographic areas have been updated for the 2011 Census using source materials from provincial and territorial authorities.

The attribute data associated with the polygons in the boundary files were verified against the data in the Spatial Data Infrastructure and found to be accurate.

Logical consistency

Logical consistency describes the fidelity of relationships encoded in the data structure of the digital spatial data.

In each boundary file, all geographic areas have been verified to have a unique identifier that is valid for the 2011 Census.

The hydrographic data files were created for the boundary files to enable thematic mapping at local and regional scales.

Consistency with other products

Topology checks were performed with the road network file and boundary files to measure the degree of integration amongst these products. The results indicated the degree of integration was within the default tolerance parameters as defined below.

XY Resolution: 0.000000001 degrees

XY Tolerance: 0.00000008983153 degrees

Completeness

Completeness refers to the degree to which geographic features, their attributes and their relationships are included or omitted in a dataset. It also includes information on selection criteria, definitions used, and other relevant mapping rules.

Each boundary file contains the complete set of geographic areas for that level of the geographic hierarchy with the exception of the cartographic dissemination block file.

It is important to note that in both digital boundary files and cartographic boundary files, a geographic area may be depicted by more than one polygon. In the digital boundary files there are some geographic areas that have two or more parts. This is particularly the case for some census subdivisions. In cartographic boundary files, this is due to having removed the coastal water area from the digital boundary files, thus creating several polygons for one geographic area. In the cartographic boundary files this impacts only on geographic areas that are situated in coastal areas.

Appendix A Glossary

Adjusted counts

'Adjusted counts' refer to previous census population and dwelling counts that were adjusted (i.e., recompiled) to reflect current census boundaries, when a boundary change occurs between the two censuses.

Block-face

A block-face is one side of a street between two consecutive features intersecting that street. The features can be other streets or boundaries of standard geographic areas.

Block-faces are used for generating block-face representative points, which in turn are used for geocoding and census data extraction when the street and address information are available.

Cartographic boundary files

Cartographic boundary files (CBFs) contain the boundaries of standard geographic areas together with the shoreline around Canada. Selected inland lakes and rivers are available as a supplementary layer.

Census agricultural region

Census agricultural regions (CARs) are composed of groups of adjacent census divisions. In Saskatchewan, census agricultural regions are made up of groups of adjacent census consolidated subdivisions, but these groups do not necessarily respect census division boundaries.

Census consolidated subdivision

A census consolidated subdivision (CCS) is a group of adjacent census subdivisions. Generally, the smaller, more densely-populated census subdivisions (towns, villages, etc.) are combined with the surrounding, larger, more rural census subdivision, in order to create a geographic level between the census subdivision and the census division.

Census division

Census division (CD) is the general term for provincially legislated areas (such as county, *municipalité régionale de comté* and regional district) or their equivalents. Census divisions are intermediate geographic areas between the province/territory level and the municipality (census subdivision).

Census metropolitan area and census agglomeration

A census metropolitan area (CMA) or a census agglomeration (CA) is formed by one or more adjacent municipalities centred on a population centre (known as the core). A CMA must have a total population of at least 100,000 of which 50,000 or more must live in the core.

A CA must have a core population of at least 10,000. To be included in the CMA or CA, other adjacent municipalities must have a high degree of integration with the core, as measured by commuting flows derived from previous census place of work data.

If the population of the core of a CA declines below 10,000, the CA is retired. However, once an area becomes a CMA, it is retained as a CMA even if its total population declines below 100,000 or the population of its core falls below 50,000. Small population centres with a population count of less than 10,000 are called fringe. All areas inside the CMA or CA that are not population centres are rural areas.

When a CA has a core of at least 50,000, it is subdivided into census tracts. Census tracts are maintained for the CA even if the population of the core subsequently falls below 50,000. All CMAs are subdivided into census tracts.

Census metropolitan influenced zone

The census **metropolitan influenced zone** (MIZ) is a concept that geographically differentiates the area of Canada outside census metropolitan areas (CMAs) and census agglomerations (CAs). Census subdivisions that are outside CMAs and CAs within provinces are assigned to one of four categories according to the degree of influence (strong, moderate, weak or no influence) that the CMAs or CAs have on them. The CSDs in the territories but outside CAs are assigned a separate category.

Census subdivisions (CSDs) within provinces are assigned to a MIZ category based on the percentage of their resident employed labour force that commutes to work in the core(s) of CMAs or CAs. CSDs with the same degree of influence tend to be clustered. They form zones around CMAs and CAs that progress through the categories from 'strong' to 'no' influence as distance from the CMAs and CAs increases. As many CSDs in the territories are very large and sparsely populated, the commuting flow of the resident employed labour force is unstable. For this reason, CSDs that are outside CAs in the territories are assigned a separate category that is not based on their commuting flows.

Census subdivision

Census subdivision (CSD) is the general term for municipalities (as determined by provincial/territorial legislation) or areas treated as municipal equivalents for statistical purposes (e.g., Indian reserves, Indian settlements and unorganized territories).

Census tract

Census tracts (CTs) are small, relatively stable geographic areas that usually have a population of 2,500 to 8,000 persons. They are located in census metropolitan areas and in census agglomerations that had a core population of 50,000 or more in the previous census.

A committee of local specialists (for example, planners, health and social workers, and educators) initially delineates census tracts in conjunction with Statistics Canada. Once a census metropolitan area (CMA) or census agglomeration (CA) has been subdivided into census tracts, the census tracts are maintained even if the core population subsequently declines below 50,000.

Coordinate system

A coordinate system is a reference system based on mathematical rules for specifying positions (locations) on the surface of the earth. The coordinate values can be spherical (latitude and longitude) using angular units of measure such as degrees, minutes and seconds or planar (Universal Transverse Mercator) using linear units such as metres.

Cartographic boundary files, digital boundary files, representative points and road network files are disseminated in latitude/longitude coordinates.

Core, fringe and rural area

The terms 'core,' 'fringe' and 'rural area' replace the terms 'urban core,' 'urban fringe' and 'rural fringe' for the 2011 Census. These terms distinguish between population centres (POPCTRs) and rural areas (RAs) within a census metropolitan area (CMA) or census agglomeration (CA).

A CMA or CA can have two types of cores: the core and the secondary core. The core is the population centre with the highest population, around which a CMA or a CA is delineated. The core must have a population (based on the previous census) of at least 50,000 persons in the case of a CMA, or at least 10,000 persons in the case of a CA.

The secondary core is a population centre within a CMA that has at least 10,000 persons and was the core of a CA that has been merged with an adjacent CMA.

The term 'fringe' includes all population centres within a CMA or CA that have less than 10,000 persons and are not contiguous with the core or secondary core.

All territory within a CMA or CA that is not classified as a core or fringe is classified as rural area.

Datum

A datum is a geodetic reference system which includes an ellipsoid and an origin against which the latitude and longitude of all other points on the earth's surface are referenced. A datum may often be associated with a particular ellipsoid (mathematical reference model of the earth).

Designated place

A designated place (DPL) is normally a small community or settlement that does not meet the criteria established by Statistics Canada to be a census subdivision (an area with municipal status) or a population centre.

Designated places are created by provinces and territories, in cooperation with Statistics Canada, to provide data for submunicipal areas.

Digital boundary files

Digital boundary files (DBFs) portray the boundaries used for 2011 Census collection and, therefore, often extend as straight lines into bodies of water.

Dissemination area

A dissemination area (DA) is a small, relatively stable geographic unit composed of one or more adjacent dissemination blocks. It is the smallest standard geographic area for which all census data are disseminated. DAs cover all the territory of Canada.

Dissemination block

A dissemination block (DB) is an area bounded on all sides by roads and/or boundaries of standard geographic areas. The dissemination block is the smallest geographic area for which population and dwelling counts are disseminated. Dissemination blocks cover all the territory of Canada.

Economic region

An economic region (ER) is a grouping of complete census divisions (CDs) (with one exception in Ontario) created as a standard geographic unit for analysis of regional economic activity.

Ecumene

Ecumene is a term used by geographers to mean inhabited land. It generally refers to land where people have made their permanent home, and to all work areas that are considered occupied and used for agricultural or any other economic purpose. Thus, there can be various types of ecumenes, each having their own unique characteristics (population ecumene, agricultural ecumene, industrial ecumene, etc.).

Federal electoral district

A federal electoral district (FED) is an area represented by a member of the House of Commons. The federal electoral district boundaries used for the 2011 Census are based on the 2003 Representation Order.

Geocoding

Geocoding is the process of assigning geographic identifiers (codes or x,y coordinates) to map features and data records. The resulting geocodes permit data to be linked geographically to a place on the earth.

Households, postal codes and place of work data are linked to block-face representative points (coordinates) when the street and address information is available; otherwise, they are linked to dissemination block (DB) representative points. In some cases, postal codes and place of work data are linked to dissemination area (DA) representative points when they cannot be linked to DBs. As

well, place of work data are linked to census subdivision representative points when the data cannot be linked to DAs.

Geographic code

A geographic code is a numerical identifier assigned to a geographic area. The code is used to identify and access standard geographic areas for the purposes of data storage, retrieval and display.

Geographic reference date

The geographic reference date is a date determined by Statistics Canada for the purpose of finalizing the geographic framework for which census data will be collected, tabulated and reported. For the 2011 Census, the geographic reference date is January 1, 2011.

Land area

Land area is the area in square kilometres of the land-based portions of standard geographic areas. Land area data are unofficial and are provided for the sole purpose of calculating population density.

Map projection

A map projection is the process of transforming and representing positions from the earth's three-dimensional curved surface to a two-dimensional (flat) surface. The process is accomplished by a direct geometric projection or by a mathematically derived transformation.

The Lambert conformal conic map projection is widely used for general maps of Canada at small scales and is the most common map projection used at Statistics Canada.

National Geographic Database

The National Geographic Database (NGD) is a shared database between Statistics Canada and Elections Canada. The database contains roads, road names and address ranges. It also includes separate reference layers containing physical and cultural features, such as hydrography and hydrographic names, railroads and power transmission lines.

Place name

'Place name' provides name and location information on local place names. It also includes selected records of active and retired geographic areas as well as names from the Canadian Geographic Names Database.

'Place name' refers to the set of names that includes census subdivisions (municipalities), designated places and population centres, as well as the names of some local places.

Population centre

A population centre (POPCTR) has a population of at least 1,000 and a population density of 400 or more persons per square kilometre, based on the current census population count. All areas outside population centres are classified as rural areas. Taken together, population centres and rural areas cover all of Canada.

Population centres are classified into three groups, depending on the size of their population:

- small population centres, with a population between 1,000 and 29,999
- medium population centres, with a population between 30,000 and 99,999
- large urban population centres, with a population of 100,000 or more

Population centre population includes all population living in the cores, secondary cores and fringes of census metropolitan areas (CMAs) and census agglomerations (CAs), as well as the population living in population centres outside CMAs and CAs.

Population density

Population density is the number of persons per square kilometre.

Province or territory

'Province' and 'territory' refer to the major political units of Canada. From a statistical point of view, province and territory are basic areas for which data are tabulated. Canada is divided into 10 provinces and 3 territories.

Reference map

A reference map shows the location of the geographic areas for which census data are tabulated and disseminated. The maps display the boundaries, names and unique identifiers of standard geographic areas, as well as major cultural and physical features, such as roads, railroads, coastlines, rivers and lakes.

Representative point

A representative point is a coordinate point that represents a line or a polygon. The point is centrally located along the line, and centrally located or population weighted in the polygon.

Representative points are generated for block-faces, as well as for selected geographic areas – province/territory (PR), federal electoral district (FED), economic region (ER), census division (CD), census metropolitan area/census agglomeration (CMA/CA), census subdivision (CSD), population centre (POPCTR), designated place (DPL), census tract (CT), dissemination area (DA) and dissemination block (DB).

Households, postal codes and place of work data are linked to block-face representative points when the street and address information is available; otherwise, they are linked to dissemination block (DB) representative points. In some cases, postal codes and place of work data are linked to dissemination area (DA) representative points when they cannot be linked to DBs. As well, place of work data are linked to census subdivision (CSD) representative points when the data cannot be linked to DAs.

Road network file

The road network file (RNF) contains roads, road names, types, directions, address ranges and road ranks for the entire country. Address ranges are dwelling-based.

Rural area

Rural areas (RAs) include all territory lying outside population centres (POPCTRs). Taken together, population centres and rural areas cover all of Canada.

Rural population includes all population living in the rural areas of census metropolitan areas (CMAs) and census agglomerations (CAs), as well as population living in rural areas outside CMAs and CAs.

Spatial Data Infrastructure

The Spatial Data Infrastructure (SDI) is an internal maintenance database that is not disseminated outside of Statistics Canada. It contains roads, road names and address ranges from the National Geographic Database (NGD), as well as boundary arcs of standard geographic areas that do not follow roads, all in one integrated line layer. The database also includes a related polygon layer consisting of basic blocks (BB; basic blocks are the smallest polygon units in the database, and are formed by the intersection of all roads and the arcs of geographic areas that do not follow roads), boundary layers of standard geographic areas, and derived attribute tables, as well as reference layers containing physical and cultural features (such as hydrography, railroads and power transmission lines) from the NGD.

The SDI supports a wide range of census operations, such as the maintenance and delineation of the boundaries of standard geographic areas (including the automated delineation of dissemination blocks and population centres), and geocoding. The SDI is also the source for generating many geography products for the 2011 Census, such as cartographic boundary files and road network files.

Spatial data quality elements

Spatial data quality elements provide information on the fitness for use of a spatial database by describing why, when and how the data are created, and how accurate the data are. The elements include an overview describing the purpose and usage, as well as specific quality elements reporting on the lineage, positional accuracy, attribute accuracy, logical consistency and completeness. This information is provided to users for all spatial data products disseminated for the census.

Standard Geographical Classification

The Standard Geographical Classification (SGC) 2011 is Statistics Canada's main classification of geographic areas in Canada. It is designed to classify statistical information by geographic areas. The classification consists of four levels: geographical regions of Canada, provinces and territories, census divisions (such as counties and regional municipalities) and census subdivisions (such as municipalities). The four geographic levels are hierarchically related; a seven-digit code is used to show this relationship.

Statistical Area Classification

The Statistical Area Classification (SAC) groups census subdivisions according to whether they are a component of a census metropolitan area, a census agglomeration or a census metropolitan influenced zone (MIZ). The MIZ classifies all CSDs in provinces and territories that are outside census metropolitan areas and census agglomerations.

The Statistical Area Classification is a variant of the Standard Geographical Classification (SGC). Census subdivisions (CSDs) form the lowest level of the classification variant. The next level consists of individual census metropolitan areas (CMAs), census agglomerations (CAs) and census metropolitan influenced zones (MIZs). The highest level consists of three categories that cover all of the land mass of Canada:

- census metropolitan areas
- census agglomerations
- outside census metropolitan areas and census agglomerations.

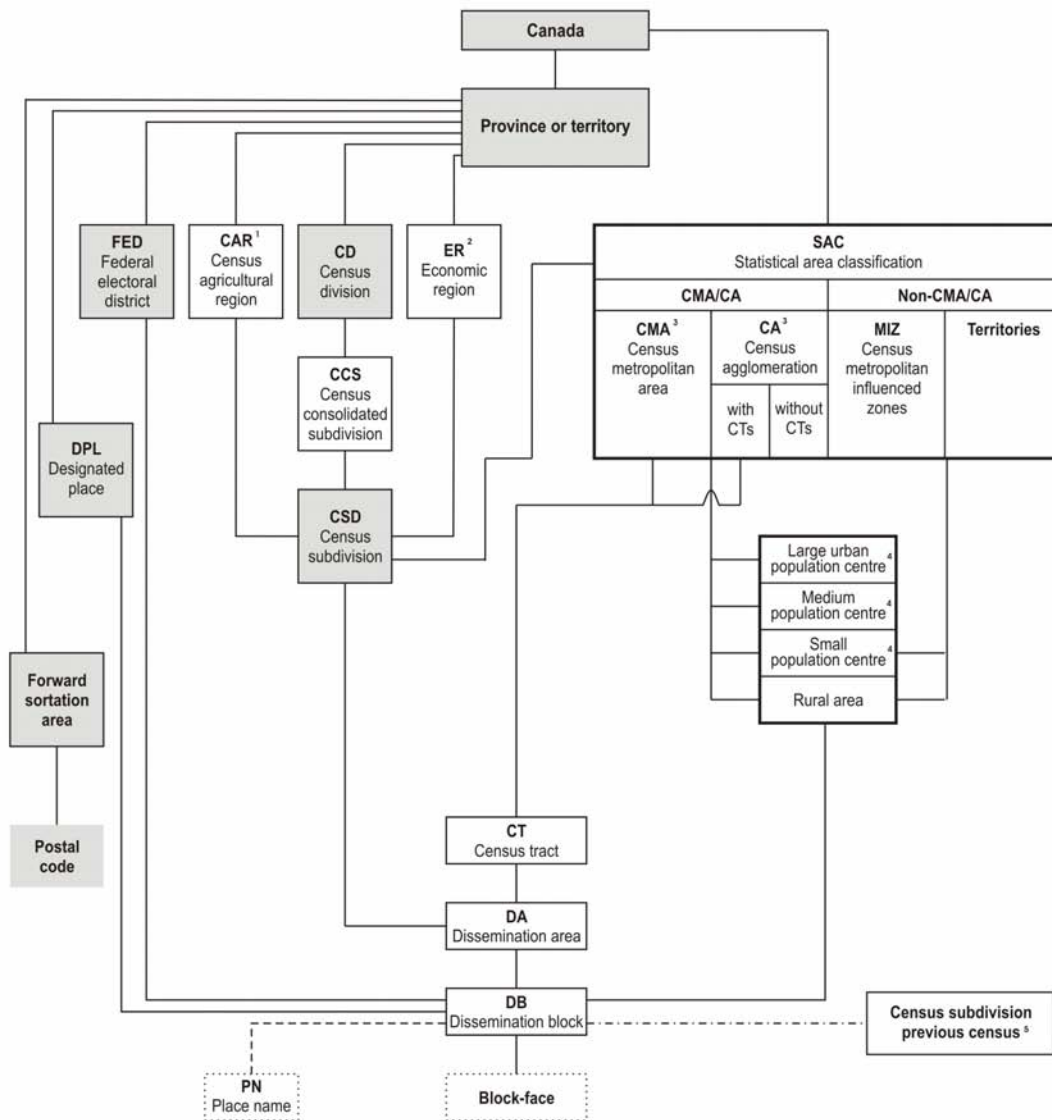
The SAC provides unique numeric identification (codes) for these hierarchically-related geographic areas. It was established for the purpose of reporting statistics.

Thematic map

A thematic map shows the spatial distribution of one or more specific data themes for selected geographic areas. The map may be qualitative in nature (e.g., predominant farm types) or quantitative (e.g., percentage population change).

Appendix B Hierarchy of standard geographic units for dissemination, 2011 Census

Figure B.1 Hierarchy of standard geographic units for dissemination, 2011 Census



1. Census agricultural regions in Saskatchewan are composed of census consolidated subdivisions.
2. Economic regions are composed of complete census divisions except for one CD in Ontario.
3. One CMA and three CAs cross provincial boundaries.
4. Five population centres (POPCTRs) cross provincial boundaries.
5. A best fit linkage is created between the previous census CSDs and the current census dissemination blocks to facilitate historical data retrieval.

- Administrative area
- Statistical area
- Polygon
- Representative point
- Best fit linkage
- Linkage using point-in-polygon process

Sources: Statistics Canada, 2011 Census of Population; Canada Post Corporation, May 2011.

Appendix C Geographic units by province and territory, 2011 Census

Table C.1 Geographic units by province and territory, 2011 Census

Geographic unit	Canada 2006	Canada 2011	N.L.	P.E.I.	N.S.	N.B.	Que.	Ont.	Man.	Sask.	Alta.	B.C.	Y.T.	N.W.T.	Nvt.
Federal electoral district (2003 Representation Order)	308	308	7	4	11	10	75	106	14	14	28	36	1	1	1
Economic region	76	76	4	1	5	5	17	11	8	6	8	8	1	1	1
Census agricultural region	82	82	3	3	5	4	14	5	12	20	8	8	0	0	0
Census division	288	293	11	3	18	15	98	49	23	18	19	29	1	6	3
Census consolidated subdivision	2,341	2,338	89	68	43	151	1,005	316	126	300	77	153	1	6	3
Census subdivision (CSD)	5,418	5,253	376	113	99	273	1,285	574	287	959	435	743	37	41	31
CSD dissolutions (January 2, 2006 to January 1, 2011)	221	...	3	0	1	6	13	13	13	26	19	126	0	1	0
CSD incorporations (January 2, 2006 to January 1, 2011)	...	56	2	0	0	3	4	2	3	1	1	33	2	5	0
Census metropolitan area	33	33	1	0	1	2	6 ¹	15 ¹	1	2	2	4	0	0	0
Census agglomeration (CA)	111	114	3	2	4	5 ¹	25 ¹	28 ¹	4	7 ¹	16 ¹	21	1	1	0
CA with census tracts	15	15	0	0	0	1	3	4	0	0	3	4	0	0	0
CA without census tracts	96	99	3	2	4	4 ¹	22 ¹	24 ¹	4	7 ¹	13 ¹	17	1	1	0
Census tract	5,076	5,452	47	0	93	102	1,371	2,273	173	109	573	711	0	0	0
Place name	21,411	35,033	1,836	709	3,138	2,679	6,985	8,091	1,839	2,687	3,117	3,528	195	153	76
Dissemination area	54,626	56,204	1,071	293	1,645	1,454	13,622	19,964	2,179	2,467	5,711	7,582	68	98	50
Dissemination block	478,831	493,345	8,732	3,573	15,842	15,415	109,455	132,777	30,471	51,610	66,332	55,529	1,359	1,492	758
Block-face	3,739,041	3,947,786	81,868	27,050	155,484	135,411	842,992	1,003,813	201,005	362,238	525,180	577,975	13,036	15,612	6,122
Forward sortation area	1,625	1,638	35	7	77	111	418	526	64	48	153	190	3	3	3
Postal code	805,640	834,056	10,878	3,316	27,852	58,617	212,162	276,844	24,568	21,923	80,948	115,435	968	516	29

... not applicable

1. Census metropolitan areas and census agglomerations crossing provincial boundaries are counted in both provinces, and, therefore, do not add up to the national total.

Sources: Statistics Canada, 2011 Census of Population; Canada Post Corporation, May 2011

Appendix D Census subdivision types by province and territory, 2011 Census

Table D.1 Census subdivision types by province and territory, 2011 Census

Census subdivision type		Canada	N.L.	P.E.I.	N.S.	N.B.	Que.	Ont.	Man.	Sask.	Alta.	B.C.	Y.T.	N.W.T.	Nvt.
		5,253	376	113	99	273	1,285	574	287	959	435	743	37	41	31
C	City / Cité	6	4	...	2
CC	Chartered community	3	3	...
CG	Community government	4	4	...
CN	Crown colony / Colonie de la couronne	1	1
COM	Community	33	...	33
CT	Canton (municipalité de)	45	45
CU	Canton unis (municipalité de)	2	2
CV	City / Ville	2	2
CY	City	149	3	2	...	4	...	46	9	16	17	49	1	1	1
DM	District municipality	52	52
HAM	Hamlet	36	2	10	24
ID	Improvement district	7	7
IGD	Indian government district	2	2
IM	Island municipality	1	1
IRI	Indian reserve / Réserve indienne	961	3	4	25	18	27	139	75	168	81	419	...	2	...
LGD	Local government district	2	2
LOT	Township and royalty	67	...	67
M	Municipality / Municipalité	3	3
MD	Municipal district	76	12	64
MÉ	Municipalité	619	619
MU	Municipality	54	54
NH	Northern hamlet	11	11
NL	Nisga'a land	1	1
NO	Unorganized / Non organisé	137	96	16	10	2	4	6	3
NV	Northern village	11	11
P	Parish / Paroisse (municipalité de)	150	150
PE	Paroisse (municipalité de)	179	179
RCR	Rural community / Communauté rurale	4	4
RDA	Regional district electoral area	158	158
RG	Region	1	1

Table D.1 Census subdivision types by province and territory, 2011 Census (continued)

Census subdivision type		Canada	N.L.	P.E.I.	N.S.	N.B.	Que.	Ont.	Man.	Sask.	Alta.	B.C.	Y.T.	N.W.T.	Nvt.
RGM	Regional municipality	4	3	1
RM	Rural municipality	413	117	296
RV	Resort village	40	40
S-É	Indian settlement / Établissement indien	28	6	5	4	1	4	3	5
SA	Special area	3	3
SC	Subdivision of county municipality / Subdivision municipalité de comté	28	28
SÉ	Settlement / Établissement	13	13
SET	Settlement	13	10	3
SG	Self-government / Autonomie gouvernementale	4	4
SM	Specialized municipality	5	5
SNO	Subdivision of unorganized / Subdivision non organisée	92	92
SV	Summer village	51	51
T	Town	743	277	7	31	13	...	88	51	147	108	14	3	4	...
TC	Terres réservées aux Cris	8	8
TI	Terre inuite	12	12
TK	Terres réservées aux Naskapis	1	1
TL	Teslin land	1	1
TP	Township	207	207
TV	Town / Ville	15	14	...	1
V	Ville	222	222
VC	Village cri	8	8
VK	Village naskapi	1	1
VL	Village	550	66	45	11	19	266	95	43	4	1	...
VN	Village nordique	14	14

... not applicable

Source: Statistics Canada, 2011 Census of Population.

Appendix E Statistics Canada Open Licence Agreement

This agreement is between Her Majesty the Queen in Right of Canada, as represented by the Minister for Statistics Canada ("Statistics Canada") and you (an individual or a legal entity that you are authorized to represent) ("you").

The following are terms governing your use of the Information. Your use of any Information indicates your understanding and agreement to be bound by these terms. If you do not agree to these terms, you may not use the Information.

Statistics Canada may modify this agreement at any time, and such modifications shall be effective immediately upon posting of the modified agreement on the Statistics Canada website. Your use of the Information will be governed by the terms of the agreement in force as of the date and time you accessed the Information.

Definitions

"Information" means any data files, data bases, tables, graphs, maps and text for which Statistics Canada is the owner or a licensee of all intellectual property rights and made available to you in accordance with this agreement, at cost or no cost, either on the Statistics Canada website or by other means as a result of a contract for goods or services.

"Value-added Products" means any products you have produced by adapting or incorporating the Information, in whole or in part, in accordance with this agreement.

Licence Grant

Subject to this agreement, Statistics Canada grants you a worldwide, royalty-free, non-exclusive licence to:

- use, reproduce, publish, freely distribute, or sell the Information;
- use, reproduce, publish, freely distribute, or sell Value-added Products; and,
- sublicense any or all such rights, under terms consistent with this agreement.

In doing any of the above, you shall:

- reproduce the Information accurately;
- not use the Information in a way that suggests that Statistics Canada endorses you or your use of the Information;
- not misrepresent the Information or its source;
- use the Information in a manner that does not breach or infringe any applicable laws;
- not merge or link the Information with any other databases for the purpose of attempting to identify an individual person, business or organization; and
- not present the Information in such a manner that gives the appearance that you may have received, or had access to, information held by Statistics Canada about any identifiable individual person, business or organization.

Intellectual Property Rights

Intellectual Property Rights, being any and all intellectual property rights recognized by the law, including but not limited to, intellectual property rights protected through legislation, in Value-added Products, shall vest in you, in such person as you shall decide or as determined by law.

Intellectual Property Rights that Statistics Canada may have in the Information shall remain the property of Statistics Canada. Intellectual Property Rights that third parties may have in the Information shall remain their property.

Acknowledgment of Source

(a) You shall include and maintain the following notice on all licensed rights of the Information:

Source: Statistics Canada, name of product, reference date. Reproduced and distributed on an "as is" basis with the permission of Statistics Canada.

(b) Where any Information is contained within a Value-added Product, you shall include on such Value-added Product the following notice:

Adapted from Statistics Canada, name of product, reference date. This does not constitute an endorsement by Statistics Canada of this product.

or any other notice approved in advance in writing by the Statistics Canada.

Advertising and Publicity

You shall not include on any reproduction of the Information or any material relating to your Value-added Product, or elsewhere:

(a) the name, crest, logos or other insignia or domain names of Statistics Canada or the official symbols of the Government of Canada, including the Canada wordmark, the Coat of Arms of Canada, and the flag symbol, without written authorization from the Treasury Board Secretariat. Request for authorization from the Treasury Board Secretariat may be addressed to:

information@fip-pcim.gc.ca
Federal Identity Program
Treasury Board of Canada Secretariat
300 Laurier Avenue West
Ottawa, Canada K1A 0R5

(b) any annotation that may be interpreted as an endorsement by the Statistics Canada of the Value-added Product or that would imply that you have an exclusive distribution arrangement for any or all of the Information or that you have access to any confidential information or information not available to others.

No Warranty and no Liability

The Information is licensed 'as is', and Statistics Canada makes no representations or warranties whatsoever with respect to the Information, whether express or implied, in relation to the Information and expressly disclaims any implied warranty of merchantability or fitness for a particular purpose of the Information.

Statistics Canada or any of its Ministers, officials, servants, employees, agents, successors and assigns shall not be liable for any errors or omissions in the Information and shall not, under any circumstances, be liable for any direct, indirect, special, incidental, consequential, or other loss, injury or damage, however caused, that you may suffer at any time by reason of your possession, access to or use of the Information or arising out of the exercise of your rights or the fulfilment of your obligations under this agreement.

Term

This agreement is effective as of the date and time you access the Information and shall terminate automatically if you breach any of the terms of this agreement.

Notwithstanding termination of this agreement:

1. you may continue to distribute Value-added Products for the purpose of completing orders made before the termination of this agreement provided you comply with the requirements set out in the Acknowledgment of Source clause; and

2. individuals or entities who have received Value-added Products or reproductions of the Information from you pursuant to this agreement will not have their licences terminated provided they remain in full compliance with those licences.

Survival

All obligations which expressly or by their nature survive termination of this agreement shall continue in full force and effect. For greater clarity, and without limiting the generality of the foregoing, the following provisions survive expiration or termination of this agreement: Acknowledgment of Source, and No warranty and no Liability.

Applicable Law

This agreement shall be governed and construed in accordance with the laws of the province of Ontario and the laws of Canada applicable therein. The parties hereby attorn to the exclusive jurisdiction of the Federal Court of Canada.